

Windows XP Drivers Installation Guide for Integra Series Instruments

Installation Steps:

Step 1:

Download the drivers to your PC and copy to your Desktop, or use the default drivers provided on CD.

Step 2:

Power on the instrument and wait for the bootup sequence. Then, plug in a USB-B device cable from the back of the unit into the PC USB port. Once the USB connection is configured, the “Found new hardware” message is shown.

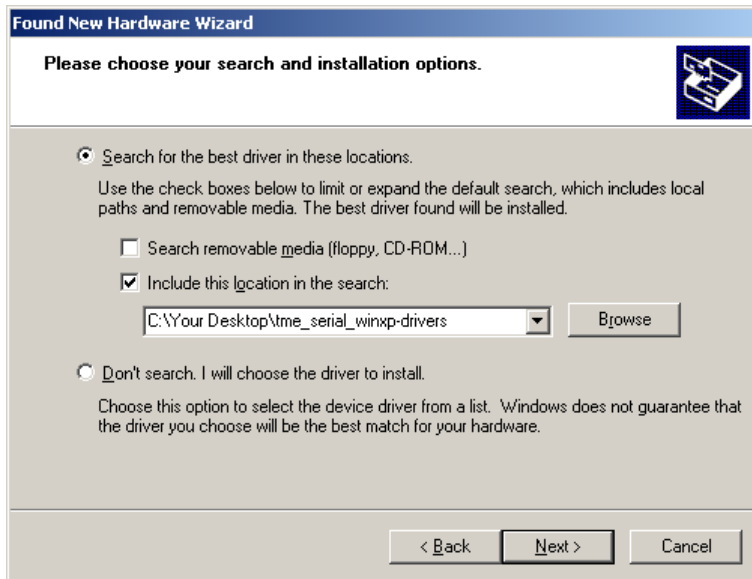
Step 3:

Once you see the hardware wizard screen, click “Install from a list or specific location” and then “Next”.



Step 4:

Check the “Search removable media” option if you have the installation CD, or check the “Include this location” option and continue with the next step.



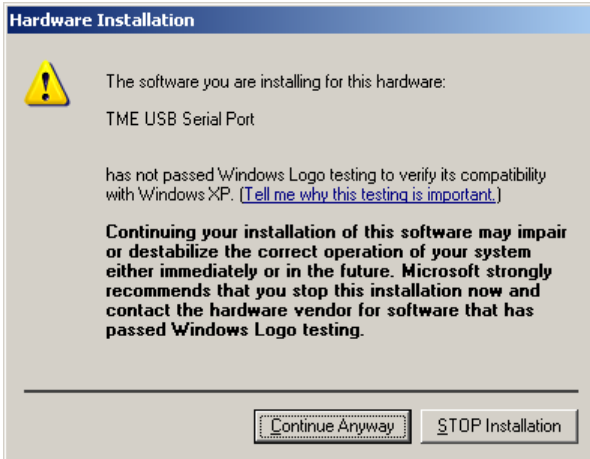
Step 5:

Click the “Browse” button to choose the folder where the driver files are located and then click the “OK” button, similar to the following:



Step 6:

Click “Next” and then wait as the driver is verified. You may get a message indicating that the driver has not passed the Windows Logo testing, but click “Continue Anyway”



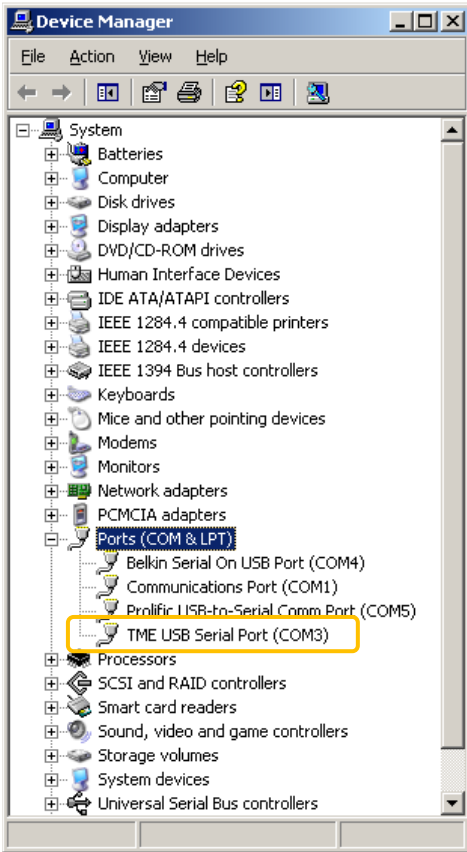
Step 7:

After the system creates a restore point and copies the driver file, you should have a final message box indicating that the driver was successfully installed.



Step 8:

Click the “Finish” button and verify that the hardware was installed correctly by looking in the device manager. Go to the Control Panel, open “System” and then choose “Hardware” tab. Click on the “Device Manager” button. Look in the “Ports (COM & LPT)” tab and verify that you see “TME USB Serial Port” with a COM port number assigned.



Step 9:

Test the operation using any serial communications software, such as Hyper Terminal, WinWedge, etc.