



RPF Restraining Plate Fixture

For Leak Testing and Seal Strength Testing of Flexible, Non-Porous Packages

Use with the TME BT-1000 Automated Package Tester for:

Leak Testing: Restraining stabilizes expansion during pressurization. Semi-porous surfaces are available to test without blocking any holes in the surface material.

Seal Strength Testing: Restraining plate fixtures provide consistent stress loading on all seals of open ended or closed packages

Restraining plates limit the tested internal volume of the package, can increase the sensitivity of the test.

Restraint equalizes the stress on package seals being tested, and controls stretching expansion when pressurized

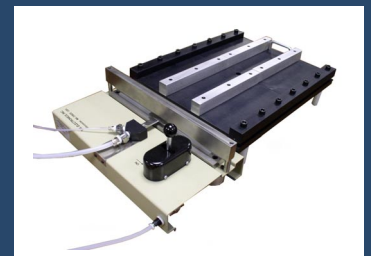
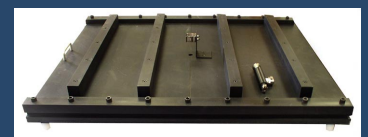
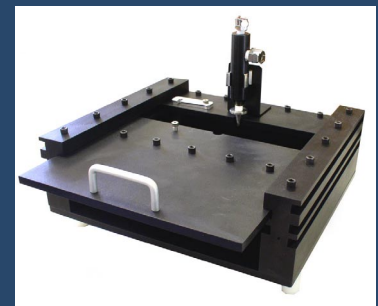
Restraining plates can be used with the TME TS-01/04 Open Package Fixtures to test open ended packages

Closed packages can be restrained and tested with the TME Package-Port package entry system.

Restraining gap adjusts from $\frac{1}{4}$ to one inch to accommodate most package sizes. Other gap sizes are available on a custom basis.

Plates can be reinforced for higher pressure package testing.

Restraining Plate Fixtures from TME conform to ASTM testing standards.



TMElectronics, Inc.

45 Main Street, Boylston, MA 01505 USA
800-370-0501 or 508-869-6400